



RESIDENCE

5 Clyde Gardens, Larkhall, ML9 2FS

www.residencestateagents.co.uk



Viewing by appointment with Residence Hamilton

T: 01698 444333 | E: hamilton@residenceestateagents.co.uk | A: 34 Cadzow Street, Hamilton, ML3 6DG



RESIDENCE



5 Bedrooms | 2 Public Rooms | 4 Bathrooms



An exceptional five-bedroom detached family home, built in the style of the Cartland house type, combining contemporary architecture with a premium specification and beautifully designed living spaces. Finished in attractive smooth render with contrasting slate roofing, zinc-clad dormer detailing and architectural brick features, this impressive home offers luxury modern living within the exclusive Clyde Gardens development. Thoughtfully designed, the property benefits from a superb specification including underfloor heating, high-performance double glazing, LED soffit lighting, electric garage access doors and bespoke luxury kitchen with integrated Siemens appliances. The bathrooms and en-suites are finished with contemporary sanitary ware and quality ceramic tiling by Porcelanosa.

The accommodation extends to a welcoming entrance hallway leading to a spacious front-facing lounge, separate dining room, and a stunning open-plan kitchen/family room with direct access to the landscaped rear garden with composite decking and glass panels. A practical utility room, guest WC and integral garage complete the ground floor.

The upper level provides five well-proportioned bedrooms, including a generous principal bedroom with fitted storage and en-suite shower room, a further bedroom with its own en-suite shower room, alongside bedrooms three, four and five, providing excellent flexibility for family living, guests or home working. A contemporary family bathroom and convenient Jack & Jill shower room complete the accommodation.

Externally, the property features beautifully landscaped gardens designed for modern outdoor living, including a stylish pergola, contemporary entertaining area, paved seating and low-maintenance landscaping, creating an ideal space for relaxation and entertaining.

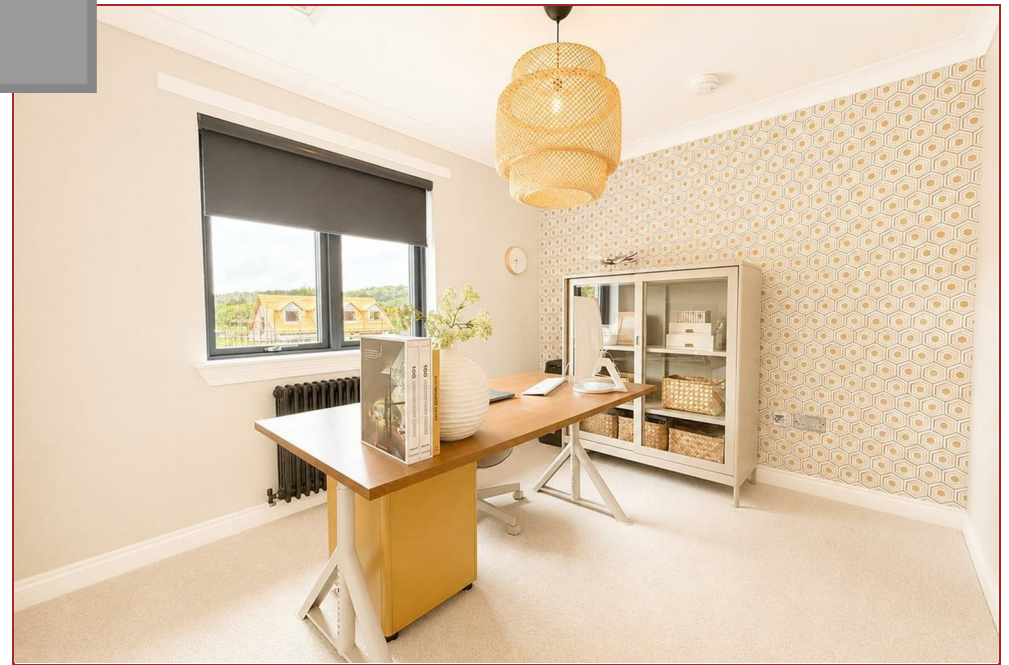
This stunning home presents a rare opportunity to acquire a beautifully finished luxury family home in one of the area's modern developments.



2421.88 sq ft | EER = B



RESIDENCE



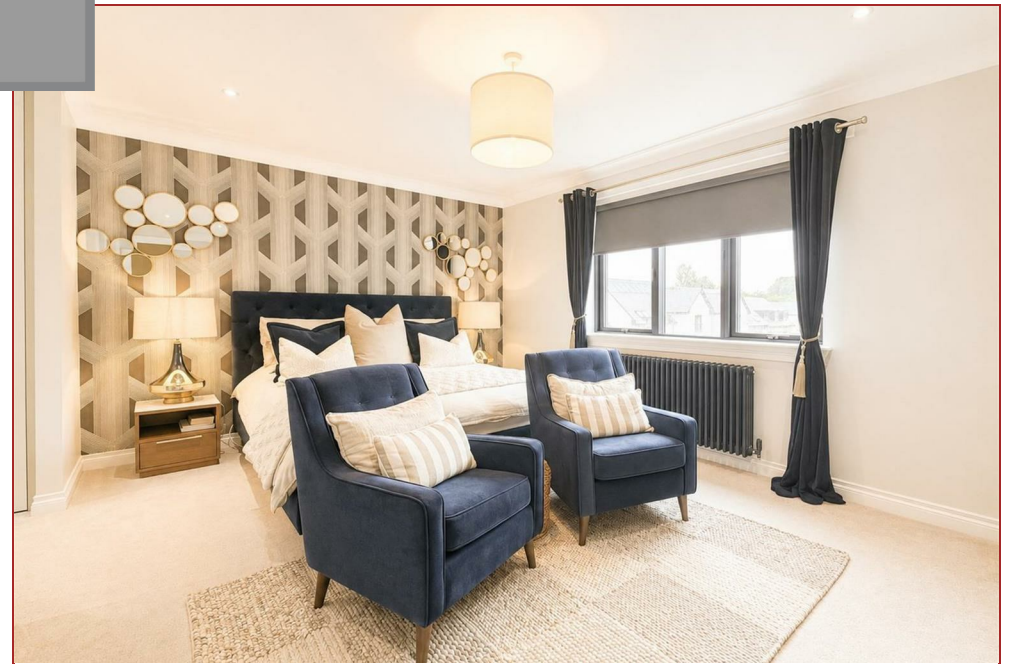
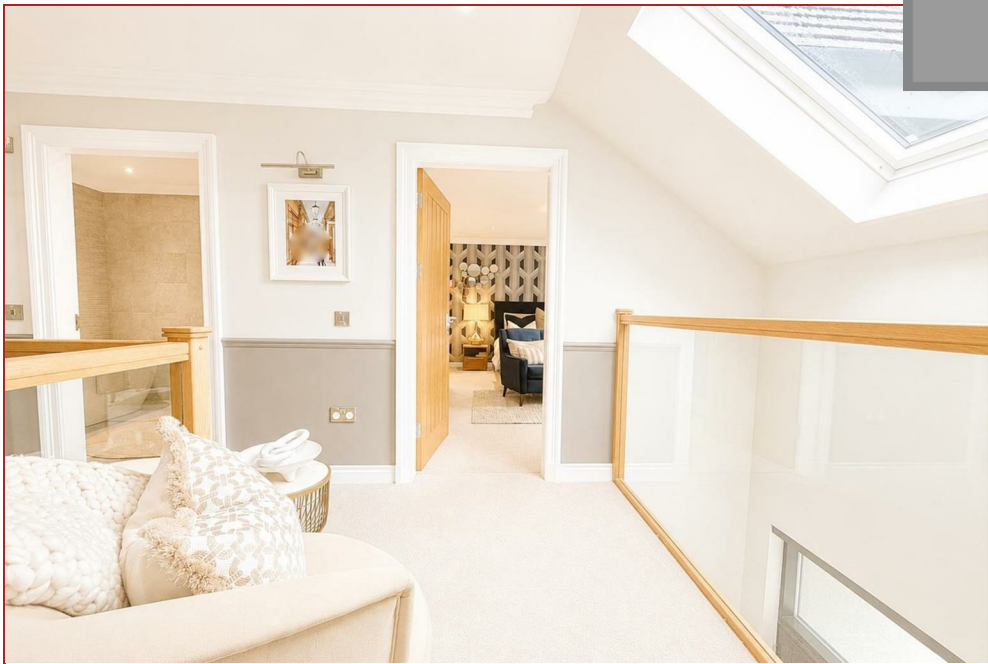


RESIDENCE





RESIDENCE





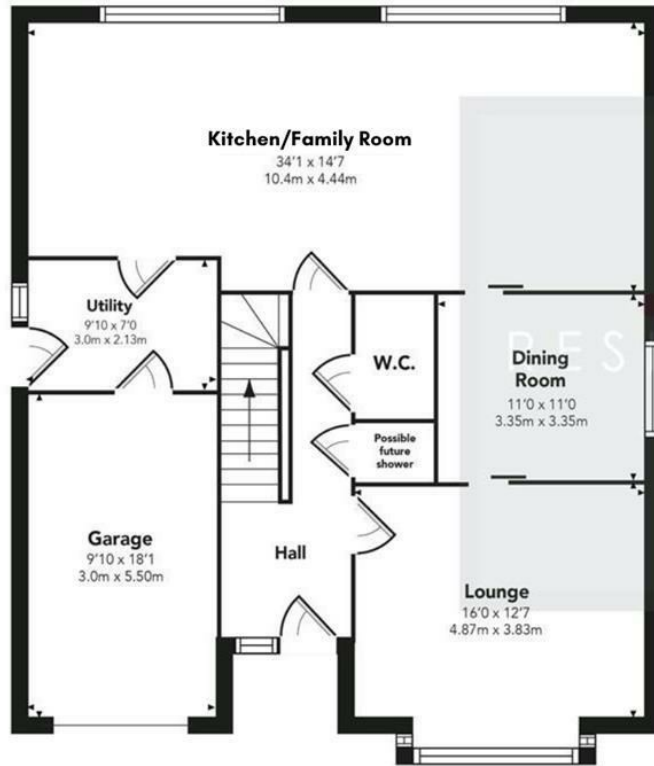
RESIDENCE



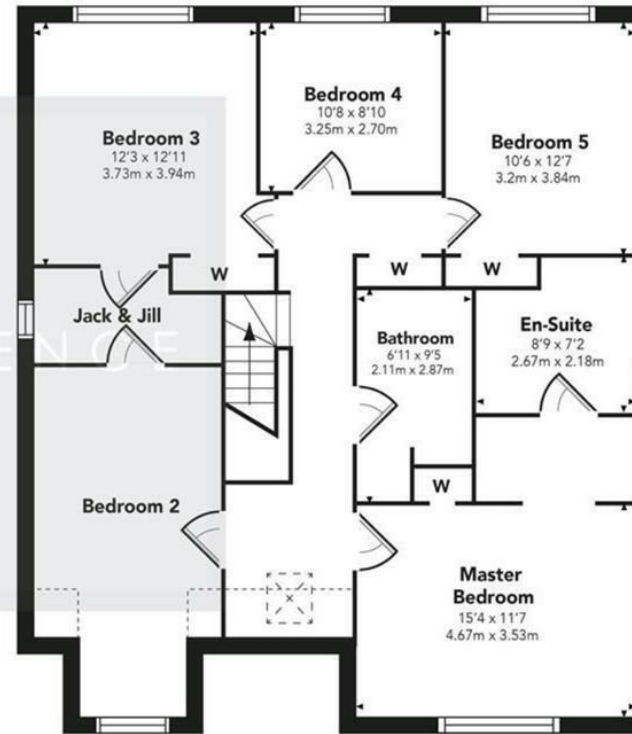


The Cartland

GROUND FLOOR



FIRST FLOOR



Floor Plan measurements are approximate and are for illustrative purposes only. While we do not doubt the floor plans accuracy, we make no guarantee, warranty or representation as to the accuracy and completeness of the floor plan. You or your advisors should conduct a careful, independent investigation of the property to determine to your satisfaction as to the suitability of the property for your space requirements.

Produced by Plush Plans Ltd

We believe these details to be accurate; however, they do not form any part of a contract. Fixtures and fittings are not included unless specified in the enclosed. Photographs are for general information and it must not be inferred that any item is included for sale with the property. All distances and measurements are approximate. Floorplans may not be to scale and are for illustration purposes only.